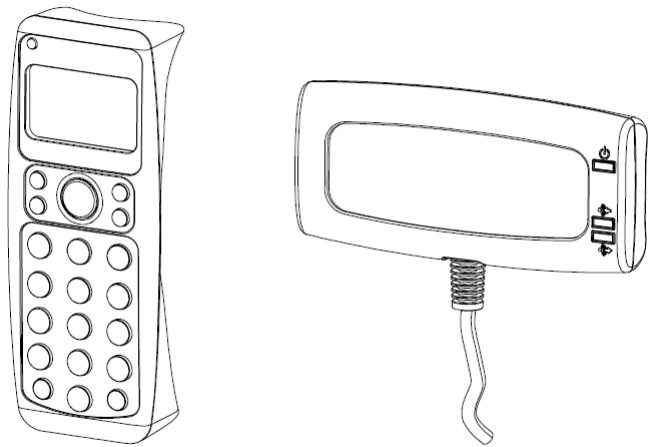


SMART™



Service Parts Diagrams

For Model:

SRP-24

SRP-32

Service Parts Diagrams Revision History

Revision 1 - July, 2009

- New document

Revision 2 - March, 2010

- Change part numbers to "PE" versions

Revision 3 - May, 2012

- Change SRP-PE-RCV-1 to SRP-RCV-1

Standard Warranty Terms

Base product: Two-year limited equipment warranty

First Customer Ship: July, 2009

SMART Technologies

3636 Research Road NW
Calgary, AB T2L 1Y1
CANADA

Support +1.403.228.5940 or Toll Free 1.866.518.6791 (Canada/U.S.)

Support Fax +1.403.806.1256

www.smarttech.com/contactserviceparts www.smarttech.com



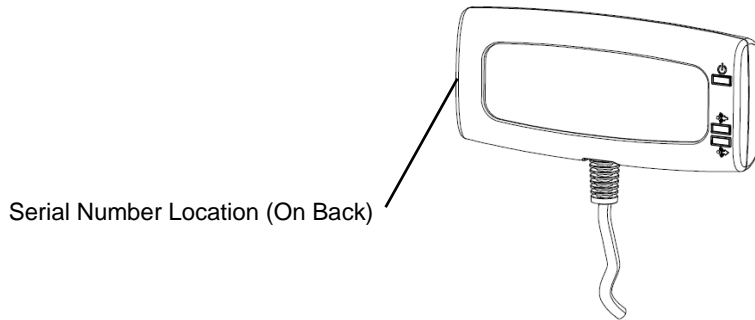
© 2012 SMART Technologies ULC. All rights reserved. SMART Board, smarttech and the SMART logo are trademarks or registered trademarks of SMART Technologies ULC in the U.S. and/or other countries. All other third-party product and company names are for identification purposes only and may be trademarks of their respective owners. Contents are subject to change without notice. 05/2012.

Service Parts Diagrams for the SMART Response System

Identifying Your Product Using the Serial Number 1
Ordering Parts 1
SRP-24/SRP-32 Parts 3

Identifying Your Product Using the Serial Number

To make sure that you have the correct service parts diagrams, you must verify the serial number of your SMART Response System. The serial number will be located on the back of the receiver on the right hand side. An example of the serial number format is shown below.



001848

Serial Number Example

Ordering Parts

Customers

To order any of the parts in these service parts diagrams, contact your local reseller. To find a reseller near you, visit www.smarttech.com/where.

Dealers and Distributors

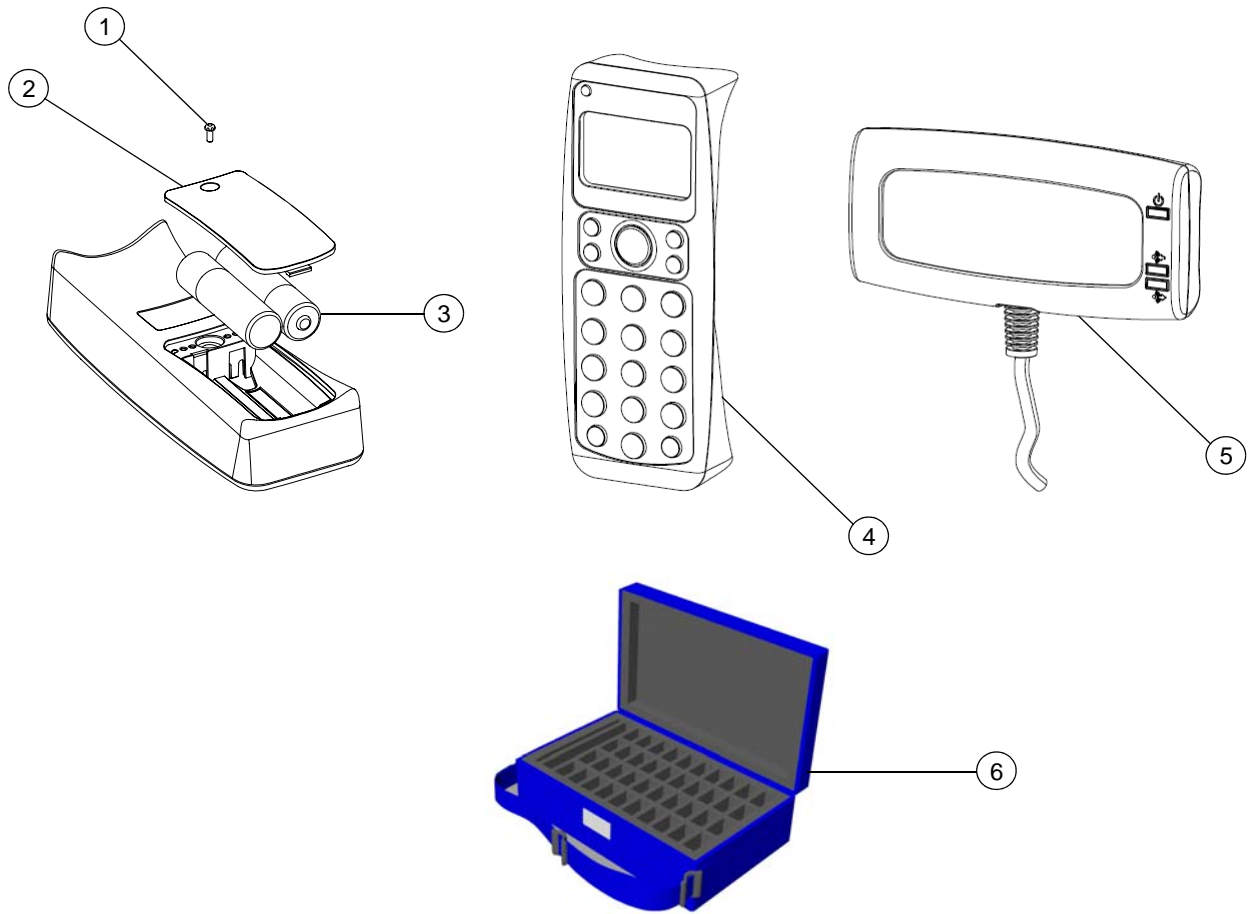
For specific technical and pricing enquiries in regards to these diagrams please contact our service parts department. Pricing is also available on-line via the SOURCE website (source.smarttech.com).

Web Form: www.smarttech.com/contactserviceparts

Phone: 1.888.42.SMART

International: +1.403.245.0333

SRP-24/SRP-32 Parts



Item	Part No.	Description
1	30-01068-20	Screw, M3 x 7.5 mm, Phillips, pan head
2	52-00439-20	Cover, battery, remote
3	01-064	Battery, AA NOTE: A quantity of 2 batteries are required per remote.
4	SRP-PE-RMT-1	SMART Response PE Remote NOTE: Includes 1 remote and 2 AA batteries.
5	SRP-RCV-1	SMART Response Receiver NOTE: Includes 1 receiver, Quick Start Guide and software DVD.
6	SRP-PE-CC	SMART Response PE Carrying Case for 1 receiver and 40 remotes
Not shown	SRP-PE-RMT-5	SMART Response PE Remotes - Set of Five NOTE: Includes 5 remotes and 10 AA batteries.
Not shown	SRP-PE-24	SMART Response PE System with Receiver and 24 Remotes NOTE: Includes 1 receiver, 24 remotes, 48 AA batteries, Phillips No. 1 screwdriver, Quick Start Guide, software DVD and 1 carrying case.
Not shown	SRP-PE-32	SMART Response PE System with Receiver and 32 Remotes NOTE: Includes 1 receiver, 32 remotes, 64 AA batteries, Phillips No. 1 screwdriver, Quick Start Guide, software DVD and 1 carrying case.